

# 1501 JOHNSON STREET NE MINNEAPOLIS, MN 55413

## VICINITY MAP



**PROPERTY  
LOCATION**

### INDEX

		▲	▲	▲
T1	TITLE			
SP1	YARD LIGHTING PLAN			
SP2	UNDERGROUND UTILITIES			
A1	FIRST FLOOR FIXTURE PLAN			
A2	SECOND FLOOR FIXTURE PLAN			
A3	REFLECTED CEILING PLAN			
A4	ROOF PLAN			
A5	HEATER THERMOSTAT PLAN			
A6	ELECTRICAL CONTROL PLAN			
FA1	FIRST FLOOR ALARM PLAN			
FA2	SECOND FLOOR ALARM PLAN			

PROJECT INFO:

**1501 JOHNSON STREET NE  
MINNEAPOLIS, MN 55413**

RELEASE DATE:

REVISIONS:

DRAFTED BY: EB

DRAWING TITLE:

**TITLE**

JOB #:

SHEET #:

**T1**

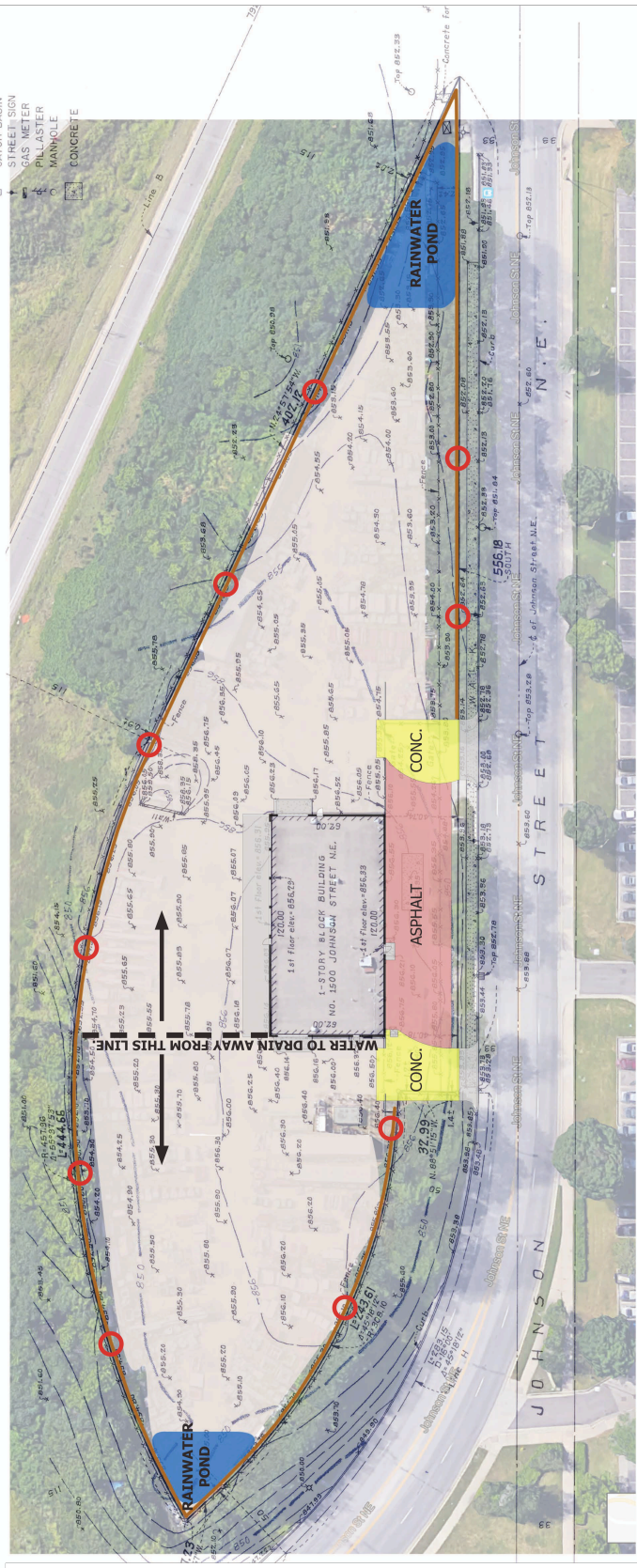
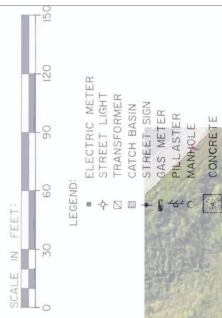
**MINNEAPOLIS PARK PROPERTIES**

1501 JOHNSON STREET NE  
MINNEAPOLIS, MN 55413

DRAWING SCALE:

**NTS**

**YARD LIGHTING PLAN**  
1501 JOHNSON STREET NE | MINNEAPOLIS



- PLACEMENT OF 10 NEW LIGHTS
- CONCRETE
- ASPHALT

PROJECT INFO:  
**1501 JOHNSON STREET NE  
MINNEAPOLIS, MN 55413**

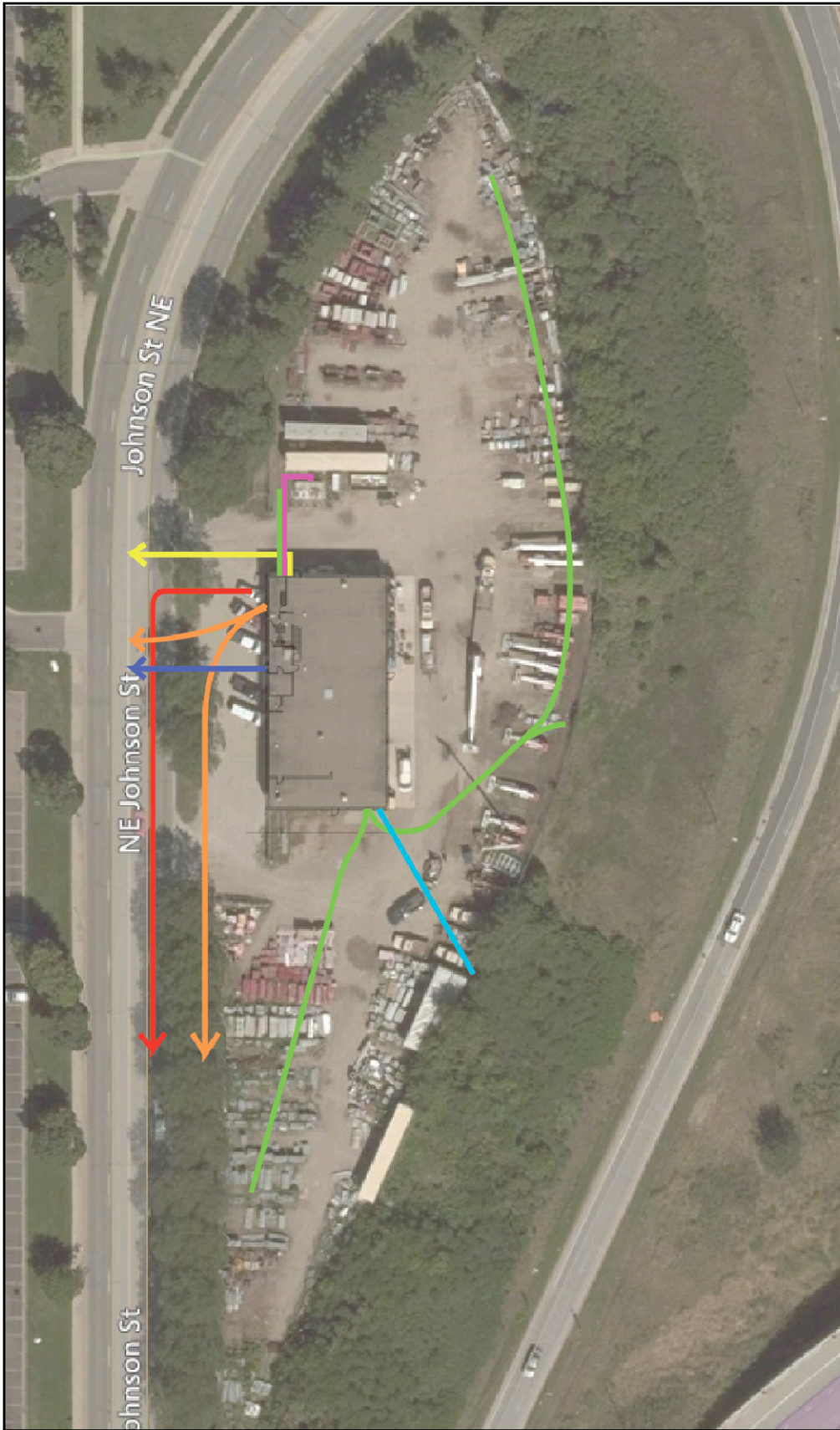
**MINNEAPOLIS PARK PROPERTIES**  
1501 JOHNSON STREET NE  
MINNEAPOLIS, MN 55413

RELEASE DATE:  
REVISIONS:  
DRAFTED BY: EB

DRAWING TITLE: **POTENTIAL  
YARD  
LIGHTING PLAN**

DRAWING SCALE: **NTS**

JOB #:  
SHEET #:  
**SP1**



KEY	
<span style="color: red;">■</span>	Xcel Energy Buried High Volt
<span style="color: orange;">■</span>	Century Link Cable Line
<span style="color: blue;">■</span>	Minneapolis Municipal Water
<span style="color: green;">■</span>	Direct Burial Romex in Yard
<span style="color: pink;">■</span>	Buried #12 Romex for Fuel Island
<span style="color: yellow;">■</span>	Centerpoint Energy Gas Line
<span style="color: lightblue;">■</span>	#4 Wire in Conduit for Yard Sub Panel

PROJECT INFO:  
**1501 JOHNSON STREET NE**  
**MINNEAPOLIS, MN 55413**

RELEASE DATE:  
 REVISIONS:  
 DRAFTED BY: EB

DRAWING TITLE:  
**UNDERGROUND UTILITIES**

JOB #:  
 SHEET #:

**MINNEAPOLIS PARK PROPERTIES**  
 1501 JOHNSON STREET NE  
 MINNEAPOLIS, MN 55413

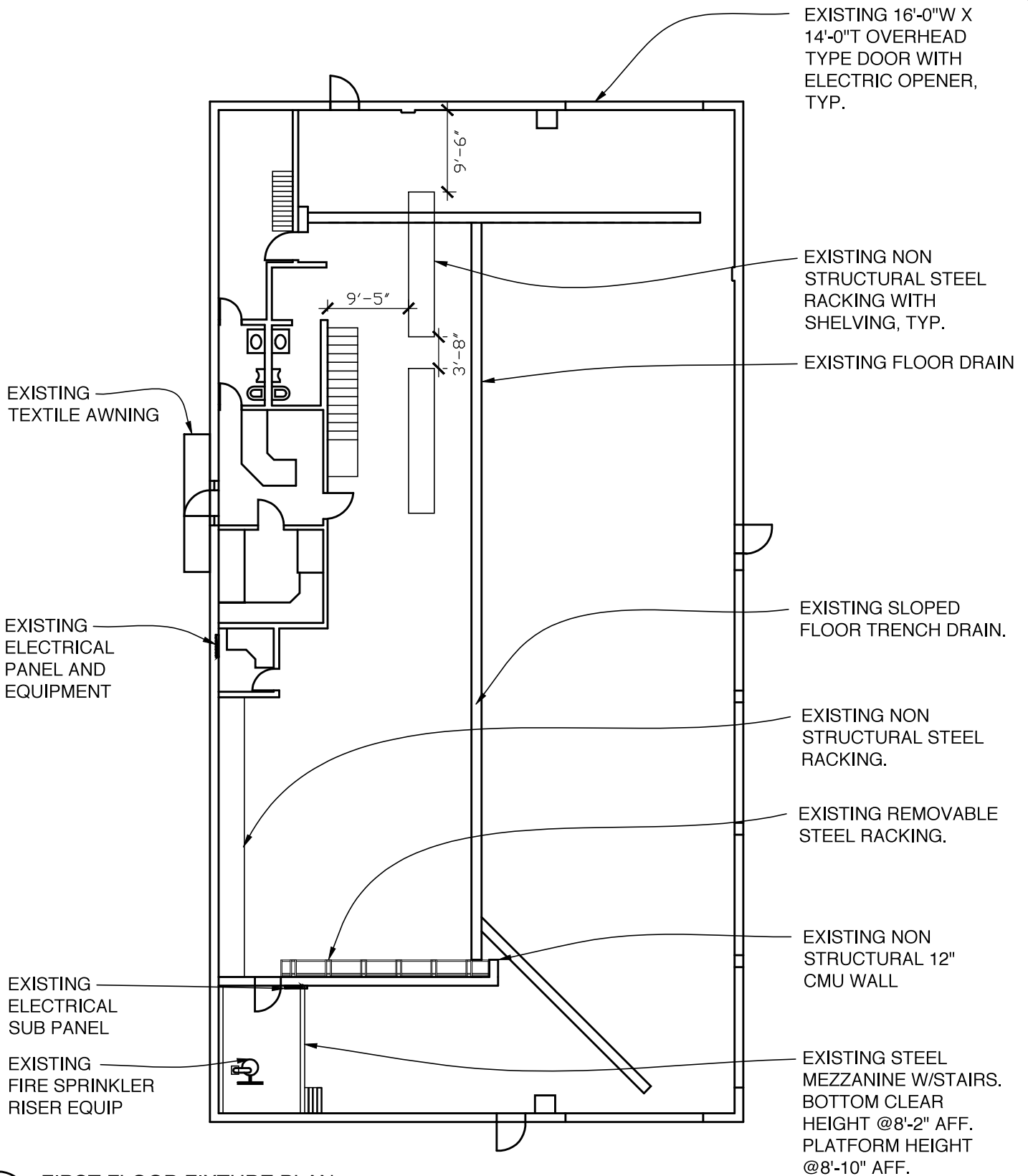
\_\_\_\_\_

\_\_\_\_\_

\_\_\_\_\_

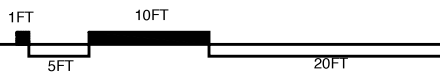
DRAWING SCALE: **NTS**

**SP2**



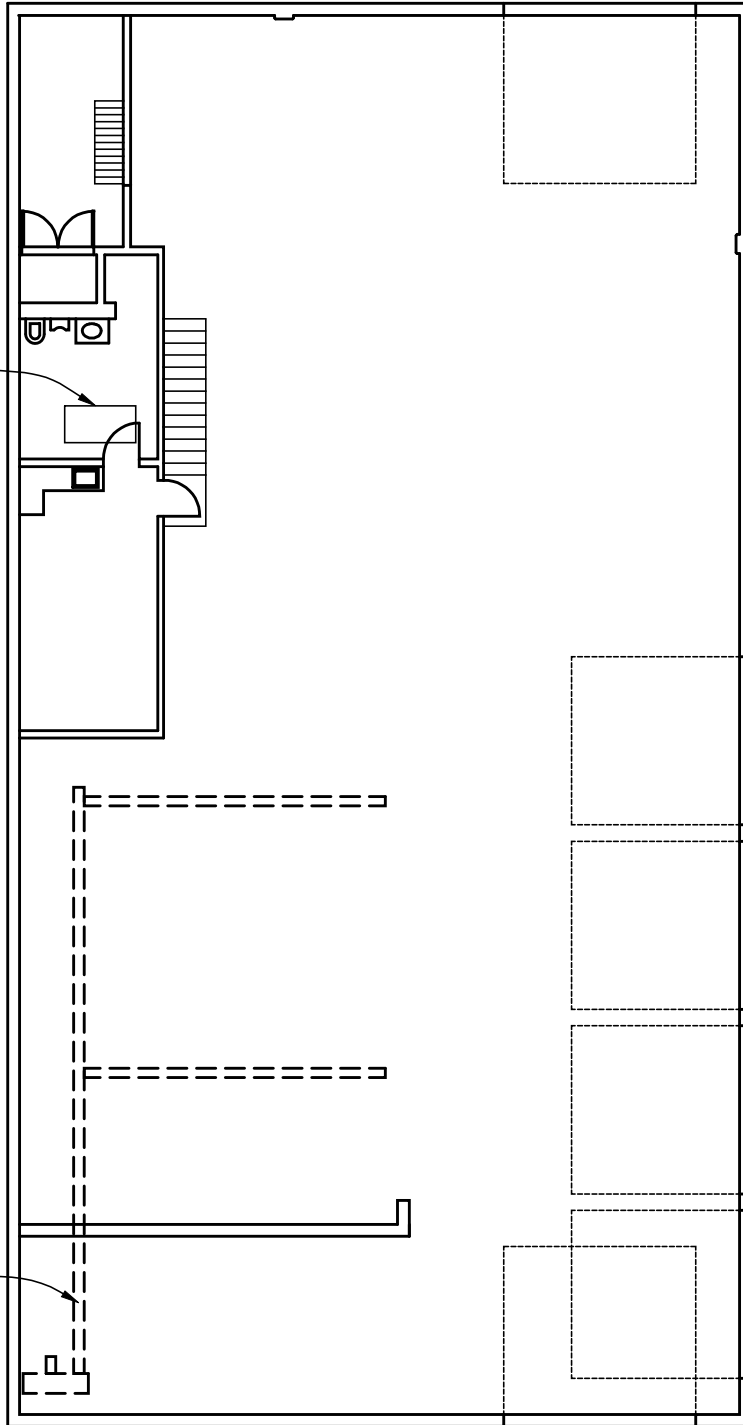
**FIRST FLOOR FIXTURE PLAN**

SCALE: 1/16" = 1'-0"



PROJECT INFO: <b>1501 JOHNSON STREET NE          MINNEAPOLIS, MN 55413</b>	RELEASE DATE:	DRAWING TITLE: <b>FIRST FLOOR          FIXTURE PLAN</b>	JOB #:
	REVISIONS:		SHEET #:
<b>MINNEAPOLIS PARK PROPERTIES</b> 1501 JOHNSON STREET NE MINNEAPOLIS, MN 55413	DRAFTED BY: EB	DRAWING SCALE: <b>1/16" = 1'-0"</b>	<h1>A1</h1>

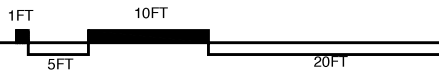
APPROXIMATE  
LOCATION OF  
EXISTING ROOF  
LADDER.



EXISTING  
VEHICLE  
EXHAUST DUCT  
SYSTEM AND  
BLOWER

**SECOND FLOOR FIXTURE PLAN**

SCALE: 1/16" = 1'-0"



PROJECT INFO:  
**1501 JOHNSON STREET NE  
MINNEAPOLIS, MN 55413**

RELEASE DATE:  
REVISIONS:  
DRAFTED BY: EB

DRAWING TITLE: **SECOND FLOOR  
FIXTURE PLAN**

JOB #:  
SHEET #:

**MINNEAPOLIS PARK PROPERTIES**  
1501 JOHNSON STREET NE  
MINNEAPOLIS, MN 55413

DRAWING SCALE: **1/16" = 1'-0"**

**A2**

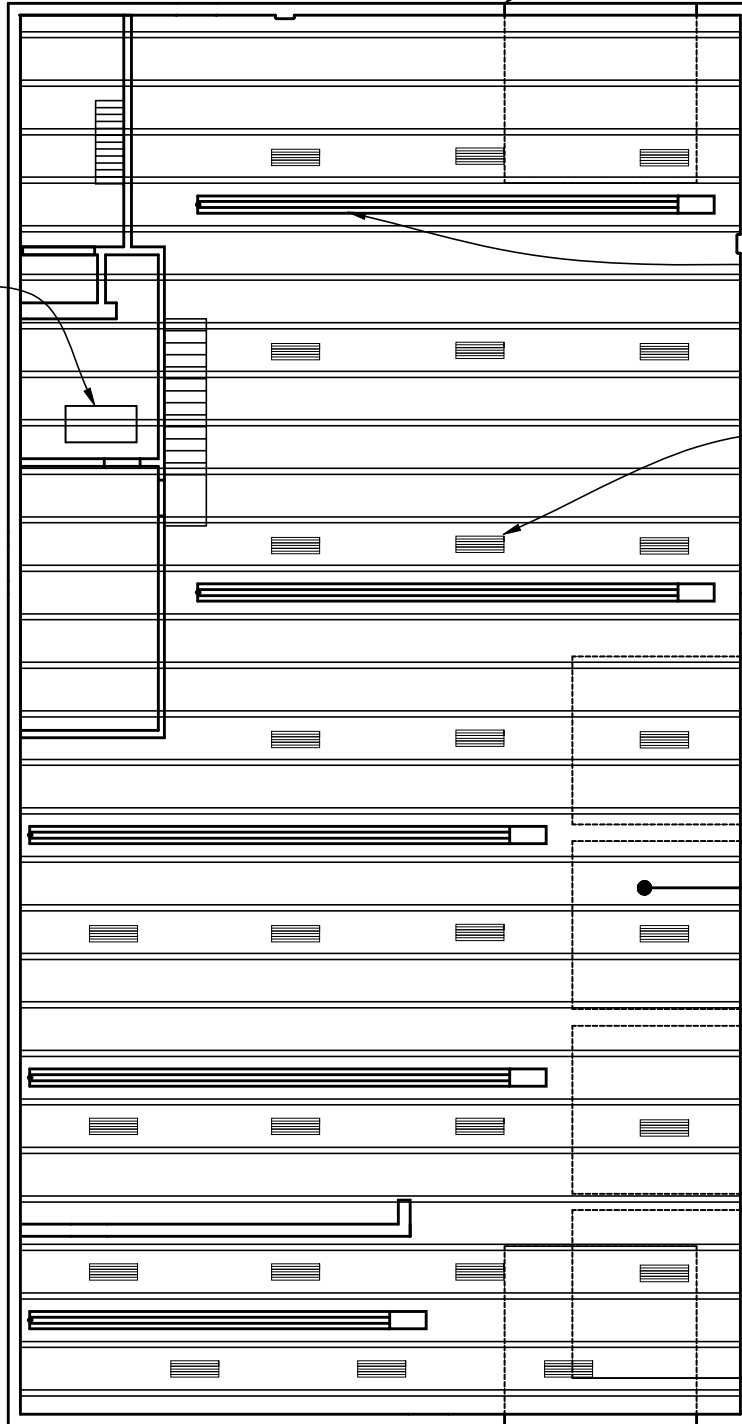
APPROXIMATE  
LOCATION OF  
EXISTING ROOF  
LADDER.

APPROXIMATE  
OUTLINE OF  
OVERHEAD DOOR  
CEILING  
CLEARANCE.

EXISTING  
SCHWANK JP100  
INFA-RED HEATER,  
TYP.

APPROXIMATE  
LOCATION OF NEW  
T8 LED LIGHT  
FIXTURES  
PROVIDED BY  
OWNER.

OPEN TO DECK  
@ 17'-6" AFF



REFLECTED CEILING PLAN

SCALE: 1/16" = 1'-0"



PROJECT INFO:

1501 JOHNSON STREET NE  
MINNEAPOLIS, MN 55413

MINNEAPOLIS PARK PROPERTIES  
1501 JOHNSON STREET NE  
MINNEAPOLIS, MN 55413

RELEASE DATE:

REVISIONS:

DRAFTED BY: EB

DRAWING TITLE:

REFLECTED  
CEILING PLAN

DRAWING SCALE:

1/16" = 1'-0"

JOB #:

SHEET #:

A3

APPROXIMATE LOCATION OF HEATER FLUE

LOCATION OF EXISTING R.T.U. GAS PIPE.

LOCATION OF EXISTING ROOF HATCH.

LOCATION OF EXISTING R.T.U.

EXISTING T.V. ANTENNA ON POST

APPROXIMATE LOCATION OF HEATER FLUE

APPROXIMATE LOCATION OF HEATER FLUE

APPROXIMATE LOCATION OF VEHICLE EXHAUST VENT SYSTEM.

APPROXIMATE LOCATION OF VENT FAN

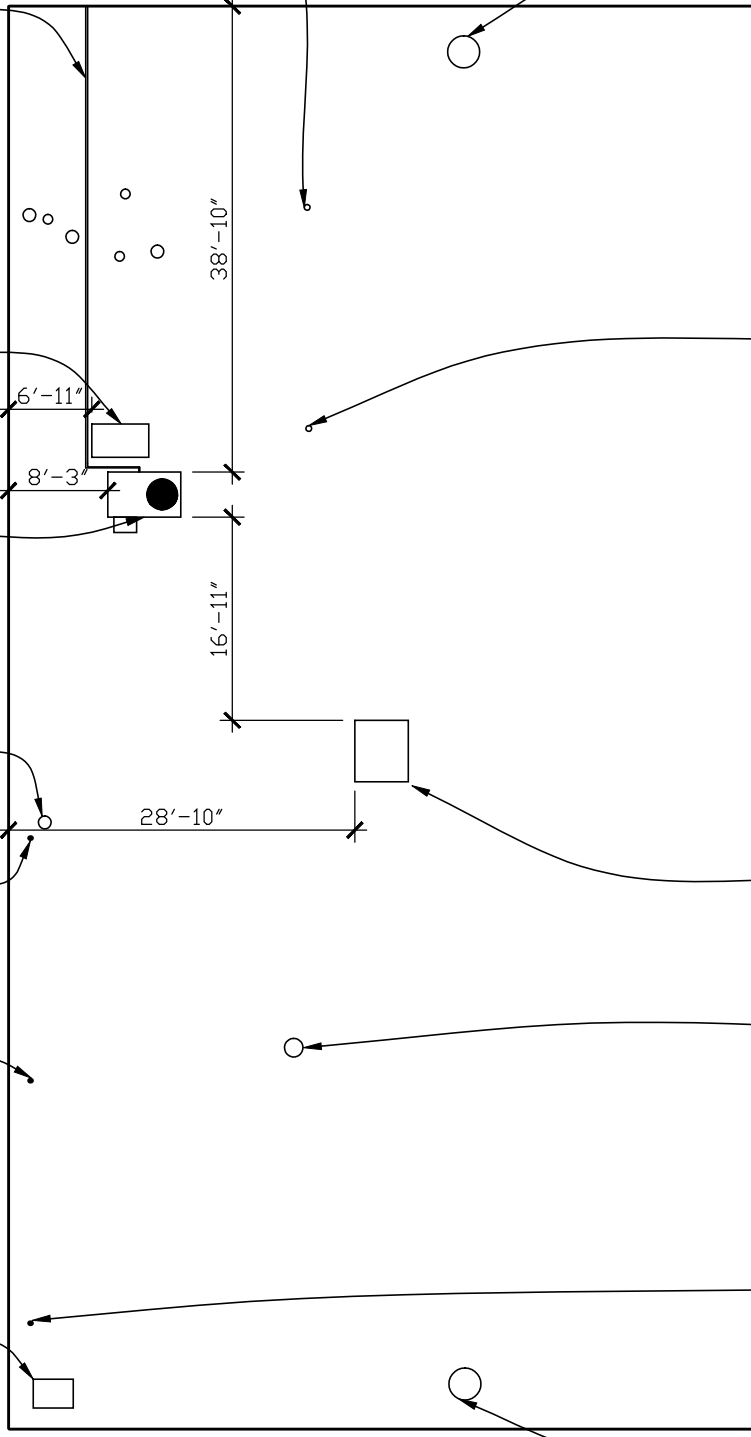
APPROXIMATE LOCATION OF HEATER FLUE

LOCATION OF CAPPED M.A.U. PENETRATION.

CAPPED ROOF PENETRATION.

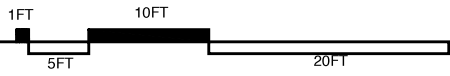
APPROXIMATE LOCATION OF HEATER FLUE

APPROXIMATE LOCATION OF VENT FAN



ROOF PLAN

SCALE: 1/16" = 1'-0"



PROJECT INFO:  
 1501 JOHNSON STREET NE  
 MINNEAPOLIS, MN 55413

RELEASE DATE:  
 REVISIONS:  
 DRAFTED BY: EB

DRAWING TITLE: ROOF PLAN

JOB #:  
 SHEET #:

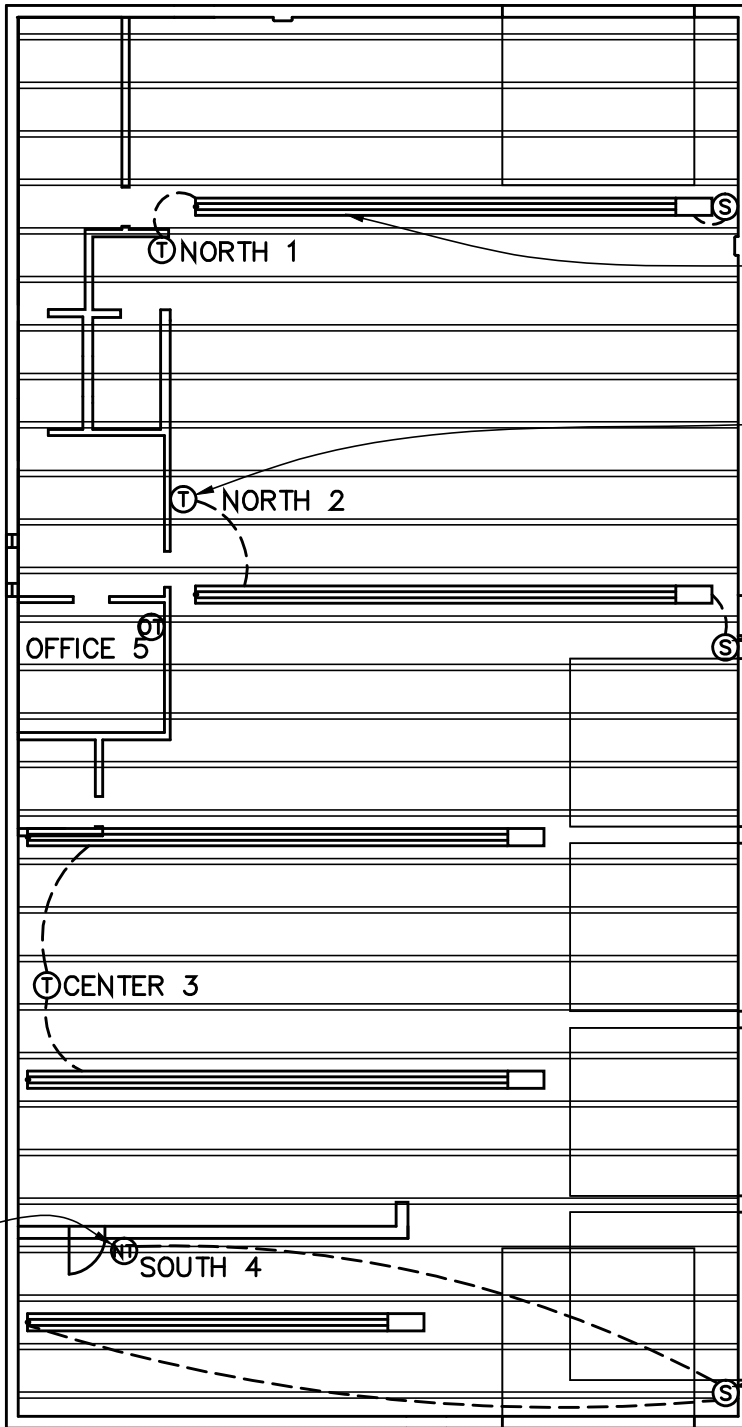
MINNEAPOLIS PARK PROPERTIES  
 1501 JOHNSON STREET NE  
 MINNEAPOLIS, MN 55413

REVISIONS:  
 DRAFTED BY: EB

DRAWING SCALE: 1/16" = 1'-0"

**A4**

CONTROL KEY	
(S)	EXISTING HEATER KILL SWITCH
(T)	NEW WIFI THERMOSTAT EXISTING LOCATION
(NT)	NEW WIFI THERMOSTAT LOCATION
(OT)	EXISTING THERMOSTAT EXG LOCATION



EXISTING SCHWANK JP100 INFA-RED HEATER, TYP.

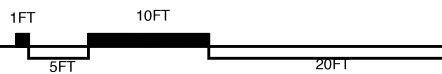
LOCATION OF EXISTING THERMOSTAT, TYP.

EXISTING HEATER KILL SWITCH

EXISTING HEATER KILL SWITCH

LOCATION OF NEW WI-FI THERMOSTAT FOR ADJACENT INFRARED HEATER.

HEATER CONTROL PLAN  
SCALE: 1/16" = 1'-0"



PROJECT INFO:  
1501 JOHNSON STREET NE  
MINNEAPOLIS, MN 55413

RELEASE DATE:  
REVISIONS:  
DRAFTED BY: EB

DRAWING TITLE: HEATER THERMOSTAT PLAN

JOB #:  
SHEET #:

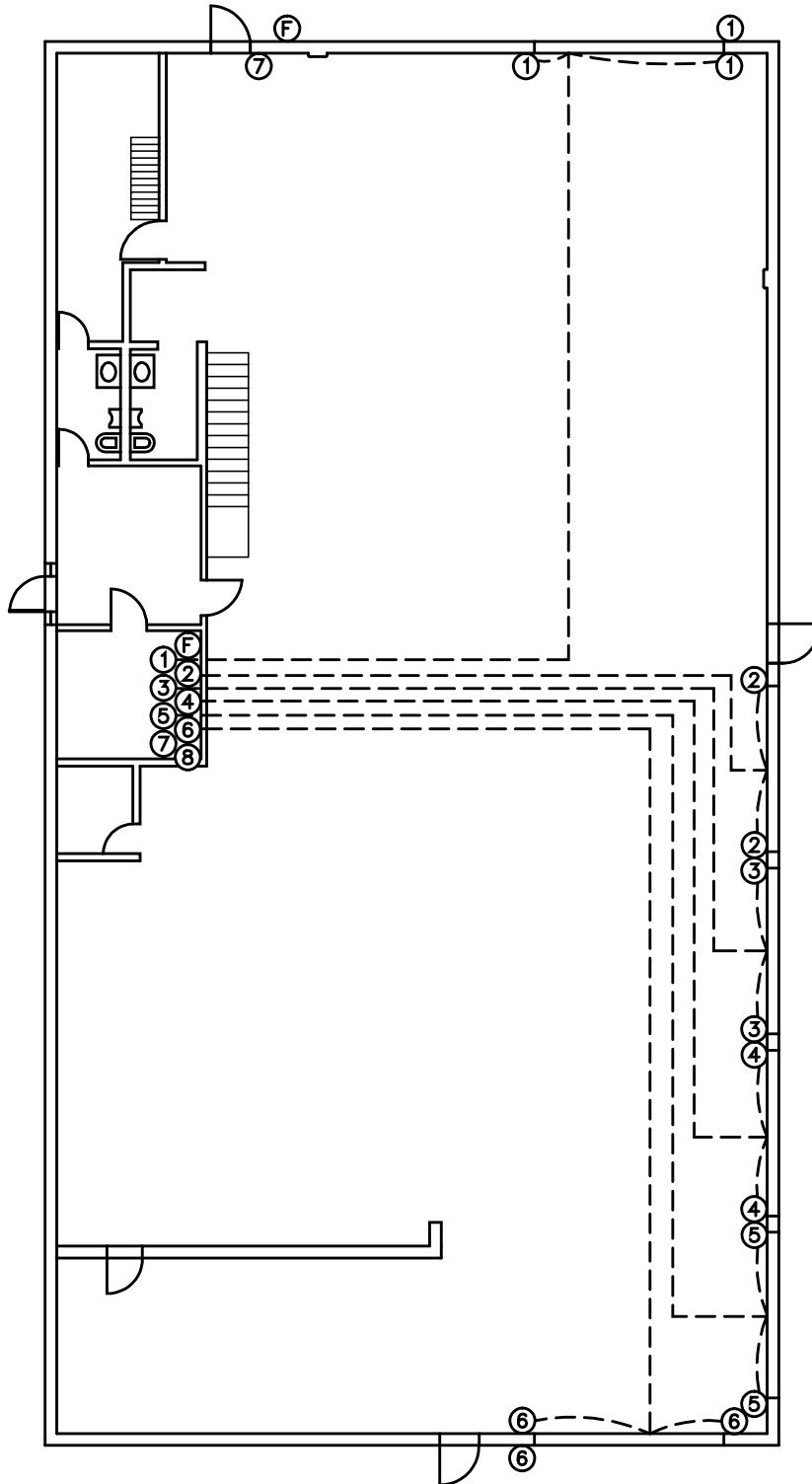
MINNEAPOLIS PARK PROPERTIES  
1501 JOHNSON STREET NE  
MINNEAPOLIS, MN 55413

DRAWING SCALE: 1/16" = 1'-0"

A5

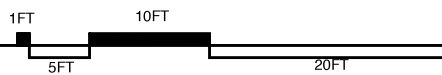


ELECTRICAL KEY	
①	NORTH OVERHEAD DOOR SWITCH
②	OVERHEAD DOOR 4 SWITCH
③	OVERHEAD DOOR 3 SWITCH
④	OVERHEAD DOOR 2 SWITCH
⑤	OVERHEAD DOOR 1 SWITCH
⑥	SOUTH OVERHEAD DOOR SWITCH
⑦	NORTH GATE SWITCH
⑧	SOUTH GATE SWITCH
F	FUEL INTERRUPTER



**ELECTRICAL CONTROL PLAN**

SCALE: 1/16" = 1'-0"



PROJECT INFO:  
**1501 JOHNSON STREET NE**  
**MINNEAPOLIS, MN 55413**

RELEASE DATE:  
 REVISIONS:  
 DRAFTED BY: EB

DRAWING TITLE:  
**ELECTRICAL CONTROL PLAN**

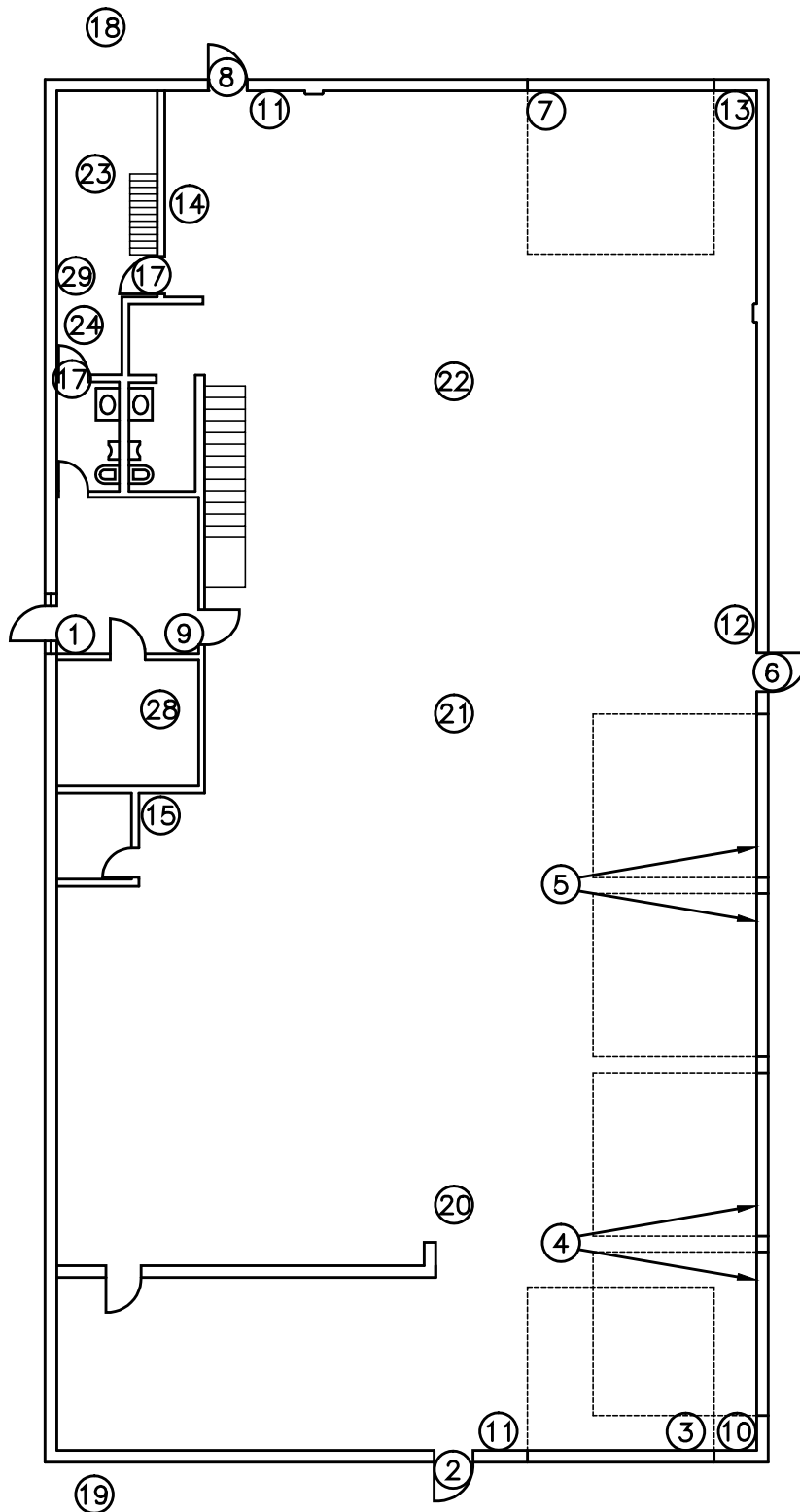
JOB #:  
 SHEET #:

**MINNEAPOLIS PARK PROPERTIES**  
 1501 JOHNSON STREET NE  
 MINNEAPOLIS, MN 55413

REVISIONS:  
 DRAFTED BY: EB

DRAWING SCALE: **1/16" = 1'-0"**

**A6**



SECURITY KEY	
①	FRONT DOOR PANEL
②	SOUTH MAN DOOR
③	SOUTH OVERHEAD
④	EAST OVERHEAD 1 & 2
⑤	EAST OVERHEAD 3 & 4
⑥	EAST MAN DOOR
⑦	NORTH OVERHEAD
⑧	NORTH MAN DOOR
⑨	FRONT OFFICE P.I.R.
⑩	SOUTH SHOP P.I.R.
⑪	MAIN SHOP SECURITY ACCESS PANEL
⑫	EAST SHOP P.I.R.
⑬	NORTHEAST SHOP P.I.R.
⑭	NORTHWEST SHOP P.I.R.
⑮	WEST SHOP P.I.R.
⑰	TOOL ROOM DOOR CONTACT
⑱	NORTH GATE
⑲	SOUTH GATE
⑳	SOUTH SHOP THERMAL
㉑	CENTRAL SHOP THERMAL
㉒	NORTH SHOP THERMAL
㉓	NW TOOL ROOM NORTH THERMAL
㉔	NW TOOL ROOM SOUTH THERMAL
㉘	OFFICE THERMAL
㉙	SECURITY SYSTEM JUNCTION BOX

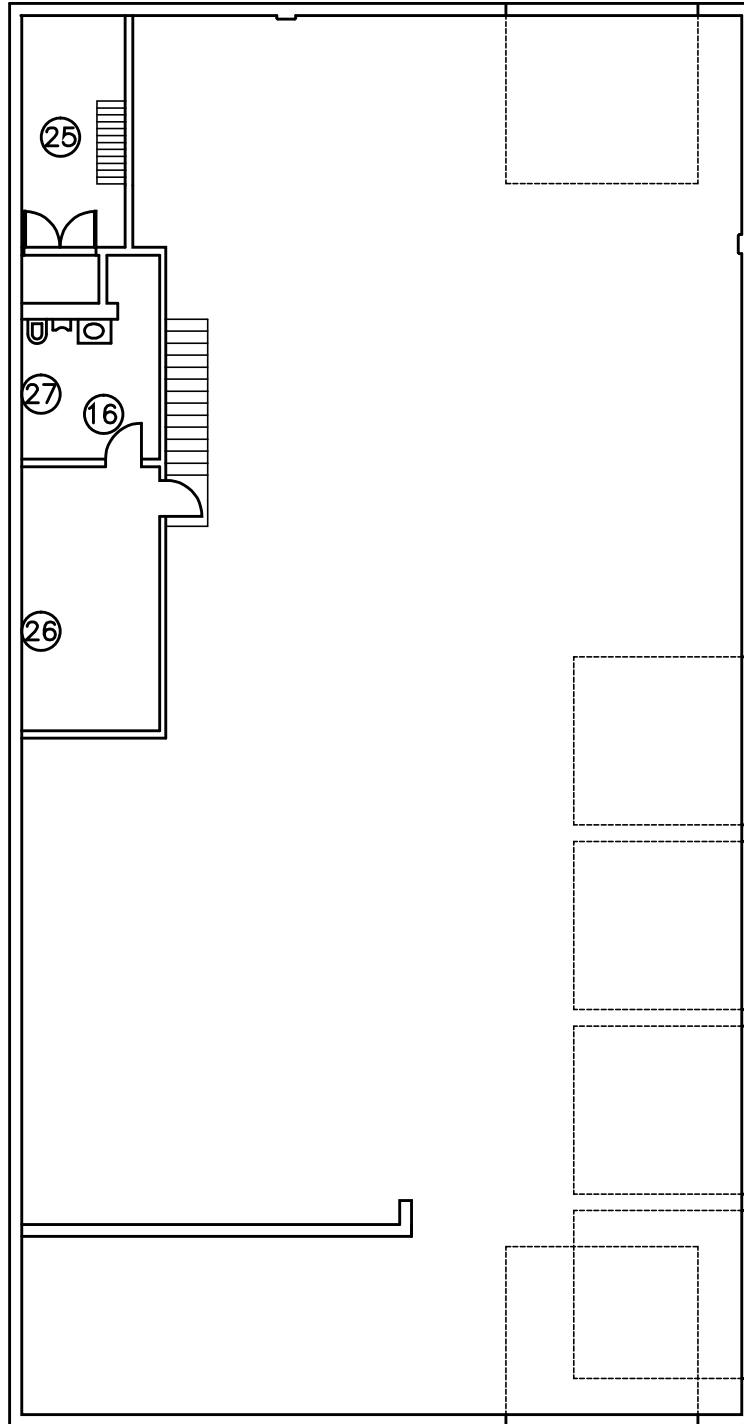
**FIRST FLOOR ALARM PLAN**

SCALE: 1/16" = 1'-0"



PROJECT INFO: <b>1501 JOHNSON STREET NE          MINNEAPOLIS, MN 55413</b>	RELEASE DATE:	DRAWING TITLE: <b>FIRST FLOOR          ALARM PLAN</b>	JOB #:
	REVISIONS:		SHEET #:
<b>MINNEAPOLIS PARK PROPERTIES</b> <small>1501 JOHNSON STREET NE          MINNEAPOLIS, MN 55413</small>	DRAFTED BY: EB	DRAWING SCALE: <b>1/16" = 1'-0"</b>	<h1 style="text-align: center;">FA1</h1>

SECURITY KEY	
①⑥	ROOF HATCH DOOR CONTACT
②⑤	NW TOOL ROOM LOFT THERMAL
②⑥	BREAK ROOM THERMAL
②⑦	LOCKER ROOM THERMAL



**SECOND FLOOR ALARM PLAN**

SCALE: 1/16" = 1'-0"



PROJECT INFO: <b>1501 JOHNSON STREET NE          MINNEAPOLIS, MN 55413</b>	RELEASE DATE:	DRAWING TITLE: <b>SECOND FLOOR          ALARM PLAN</b>	JOB #:
	REVISIONS:		SHEET #:
<b>MINNEAPOLIS PARK PROPERTIES</b> 1501 JOHNSON STREET NE MINNEAPOLIS, MN 55413	DRAFTED BY: EB	DRAWING SCALE: <b>1/16" = 1'-0"</b>	<b>FA2</b>